

# Stool Extraction and Enema Training Model

LM-117

## Instruction Manual

Thank you for purchasing the Stool Extraction and Enema Training Model.  
Read this instruction manual carefully to ensure it is used properly  
and store the manual with the product for easy access.

KOKEN CO., LTD.

1-4-14 Koraku, Bunkyo-ku, Tokyo 112-0004 JAPAN  
[www.kokenmpc.co.jp](http://www.kokenmpc.co.jp)







## Handling and Safety Instructions

**Follow the instructions strictly to ensure safety and the ability to use the product long-term.**

1. Make sure to treat the product carefully as it has been manufactured to provide the same feel as a human body.
2. Though the material of this product has a distinct odor, please rest assured that it will fade over time, is not harmful to humans, and does not affect the product's quality. Since it is coated with baby powder during manufacturing, the smell may be retained.
3. Before training, please ensure you have an enema kit prepared as it is not included.
4. Only use glycerin as a lubricant. Apply sufficient glycerin before use.  
Note: KOKEN is not liable for the deterioration of the product or damage to it caused by the use of lubricants other than glycerin.
5. Do not use oily lubricants (baby oil, olive oil etc.), alcohol-based lubricants or lubricants containing organic solvents as they may break the product.
6. When there is resistance, do not insert the enema kit. Increase the glycerin or use a different enema kit to avoid damaging the product.
7. Be sure to wash the product thoroughly after use to remove any attached glycerin. If any glycerin is left on the product and dries, it may affect your training program.
8. Apply baby powder to the buttocks before using the product to reduce friction, especially after cleaning the unit or when the surface is sticky.
9. Check the buttocks a couple of years after purchasing the product to ensure the shape of the product has not changed due to long-term use. If the shape has changed and this affects your training program, please purchase a new buttocks through a KOKEN distributor.
10. There may be air bubbles or patterns on the buttocks created during manufacturing, but this will not affect its strength as it is made from a material that is resistant to tearing.
11. Do not place any object on the product to prevent deformation.
12. Do not store the product in contact with any printed objects to prevent the transfer of colors or writing to the product.
13. Store the product in an environment with a temperature from 0°C to 50°C to prevent deformation. Avoid exposing the product to direct sunlight and UV light as they may cause the product to deteriorate or change color.
14. Be sure to store the product in a pest-free environment, as ants and other pests may damage the urethane foam material used in the product.  
Note: KOKEN is not liable for any damage caused by pests during storage.

15. Please note that there may be some indentations on the bottom of the buttocks due to the materials used, but rest assured that they will not affect the quality or function of the product.
16. Use the product in the left lateral position only.
17. Wear disposable gloves while using the product.

1. This instruction manual may be revised periodically without prior notice.
2. Reproduction of any text or illustrations in this instruction manual is prohibited without the permission of KOKEN.
3. If you notice any errors or omissions in this instruction manual, please do not hesitate to contact KOKEN.
4. KOKEN is not liable for any damages or other consequences resulting from the use of the product in a manner that deviates from the instructions provided in this manual.

# Index

1. Outline and Features .....	4
2. Components .....	5
3. Set up .....	6
4. Maintenance .....	19
5. Specifications .....	20

# 1. Outline and Features

## Outline

A human-sized model for both stool extraction and glycerin enema training

## Features

- This product enables both stool extraction and glycerin enema training using one portable model.
- As a result of the improvement of the materials used in the buttocks, anus, and rectum areas, [1] it enables users to practice stool extraction using a model that is more lifelike than ever before.
- Glycerin enema administration can be practiced using the enema drainage tube.
- The buttocks are included with the anus and rectum areas all the way through and can be easily detached to wash.

Note: [1] Compared with our Feces Removal and Glycerin Enema Training Model (LM-068)

## 2. Components



	Name
①	Torso
②	Abdomen
③	Buttocks
④	Silicone joint (between the buttocks and the enema drainage tube)
⑤	Enema drainage tube
⑥	Stand
⑦	Simulated stools (soft and hard) / Suppositories
⑧	Baby powder
⑨	Glycerin
⑩	Storage bag
⑪	Storage sheet (for the buttocks)
	Instruction manual (this document)

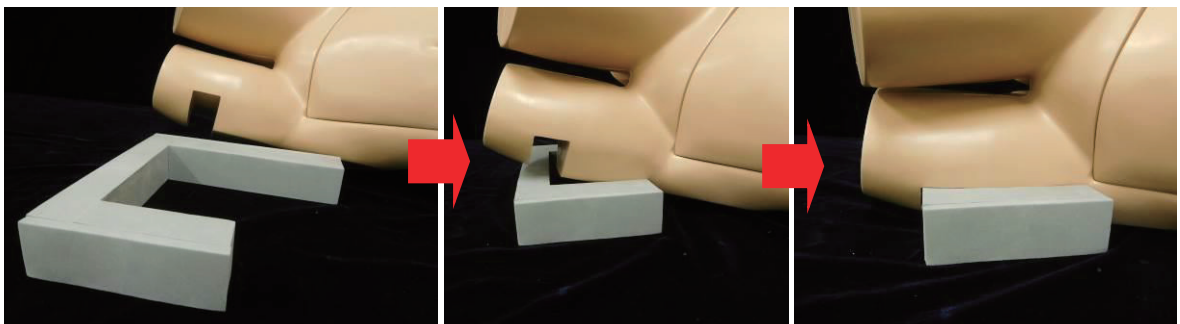
### 3. Set up

#### 3-1 Preparation

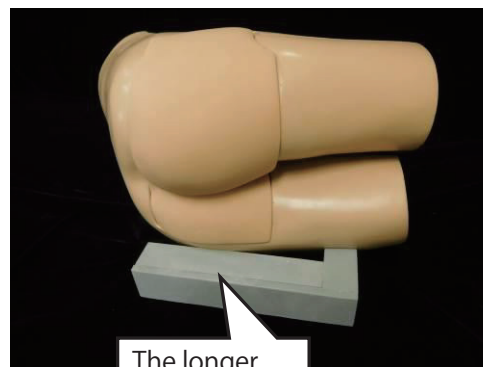
(1) Take the model out of the storage bag and remove the plastic packaging and storage sheet.



(2) Insert the stand into the groove on the torso and secure it in the left lateral position before use.



The shorter side is on the abdomen side.



The longer side is on the buttocks side.

#### NOTE

Apply baby powder to the buttocks before training when stickiness appears on the surface.

#### TIPS

Absorbent sheet for nursing care (commercially available) will come in handy to prevent any soiling of your training area.

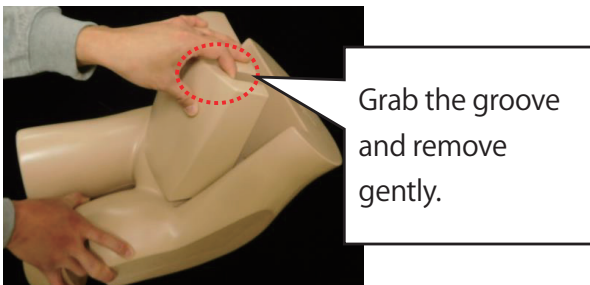


### 3-2 Set up Before Stool Extraction Training

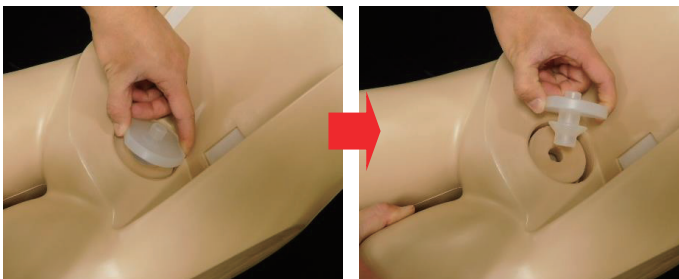
(1) Place the model with the buttocks down.



(2) Remove the abdomen from the torso.



(3) Pull the silicone joint from the upper part and remove it.



(4) Prepare the simulated soft stool (made of clay) by shaping it into an appropriate size by hand.



#### TIPS

If you want to make it even softer, you can add glycerin to adjust the softness.

(5) Stuff the simulated stool into the intestinal tract from the upper part.



**TIPS**

Before packing the simulated stool, you can apply glycerin to the inside of the intestinal tract for a more realistic sensation during insertion training.

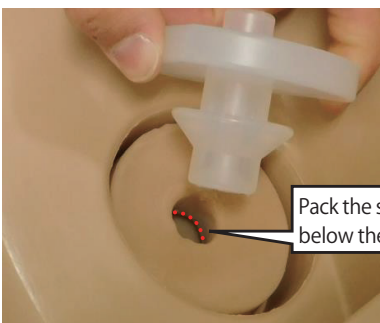
By packing the provided hard stool into the intestinal tract, you can also train with hard stool during the training session.



**NOTE**

If there is too little simulated stool inside the intestinal tract, it may move around and become difficult to extract. To prevent this, insert the simulated stool up to a point just below the insertion part of the silicone joint.

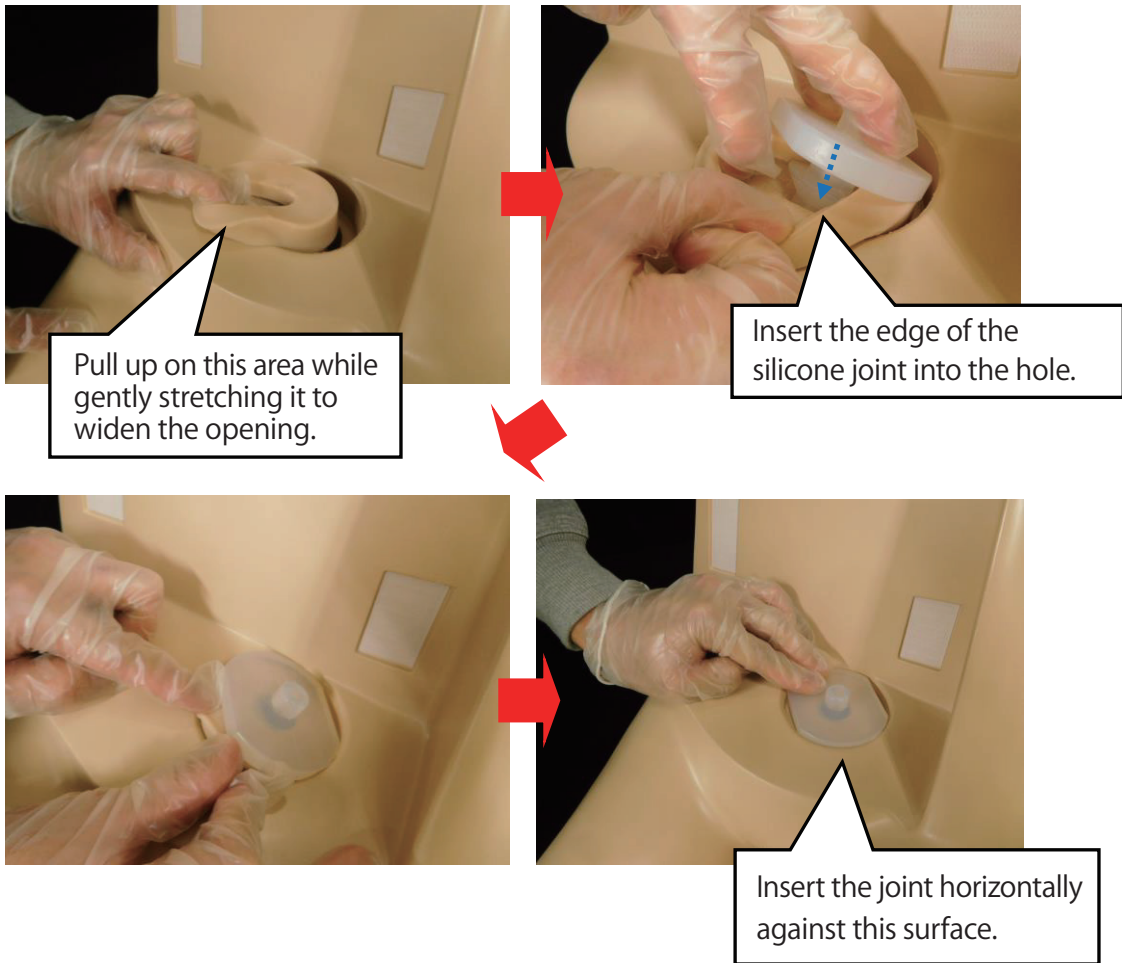
Refer to the picture below for the details.



**NOTE**

Be careful not to overfill the intestinal tract with simulated stool as it may come out from the anus.

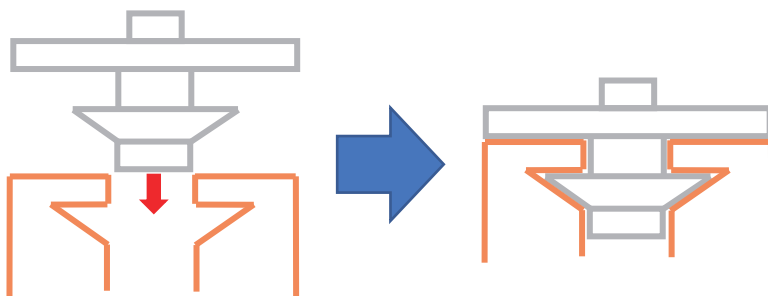
(6) Connect the silicone joint to the intestinal tract.



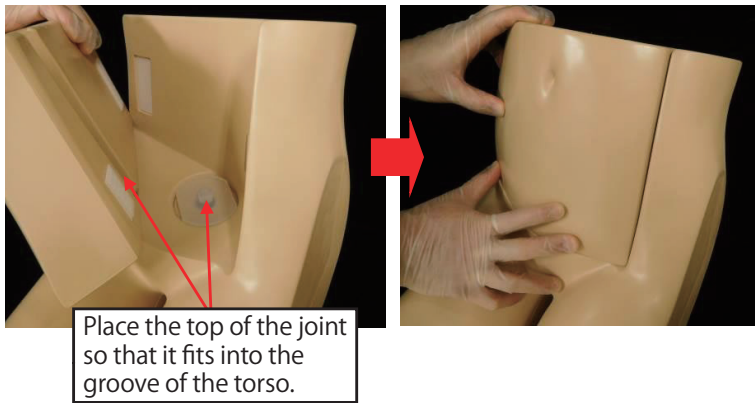
**NOTE**

There are grooves inside the upper hole of the intestinal tract which are designed to fit the flange of the silicone joint. Make sure to confirm that the joint is properly fitted into these grooves.

Refer to the pictures below that show a more detailed view of the structures of each part.



(7) Attach the abdomen to the torso.



(8) Place the model in the left lateral position while holding the buttocks.



(9) Ensure that the buttocks are securely attached to the torso.



(10) Attach the model to the stand and begin training.



**NOTE**

Be sure to apply sufficient glycerin before beginning training.

**TIPS**

The included simulated suppository can be used to practice suppository insertion. For more realistic training, we recommend first inserting a suitable amount of simulated soft stool into the intestinal tract.

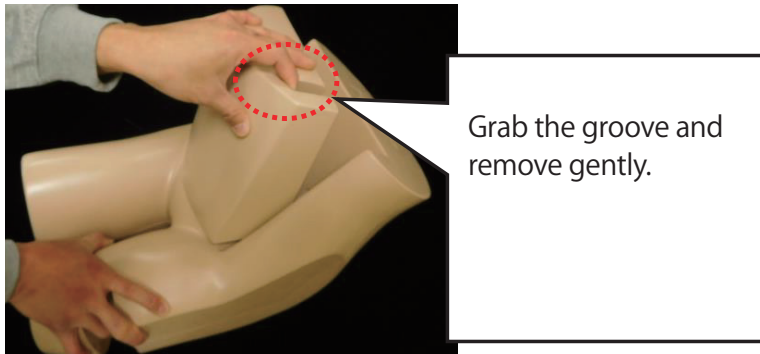


### 3-3 Set Up Before Glycerin Enema Training

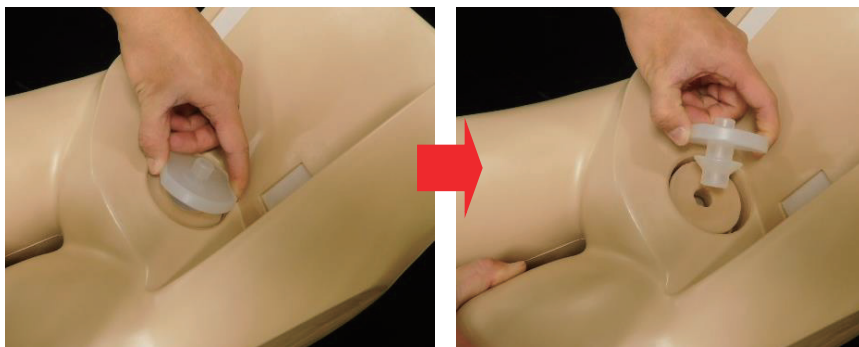
- (1) Place the model with the buttocks down.



- (2) Remove the abdomen from the torso.

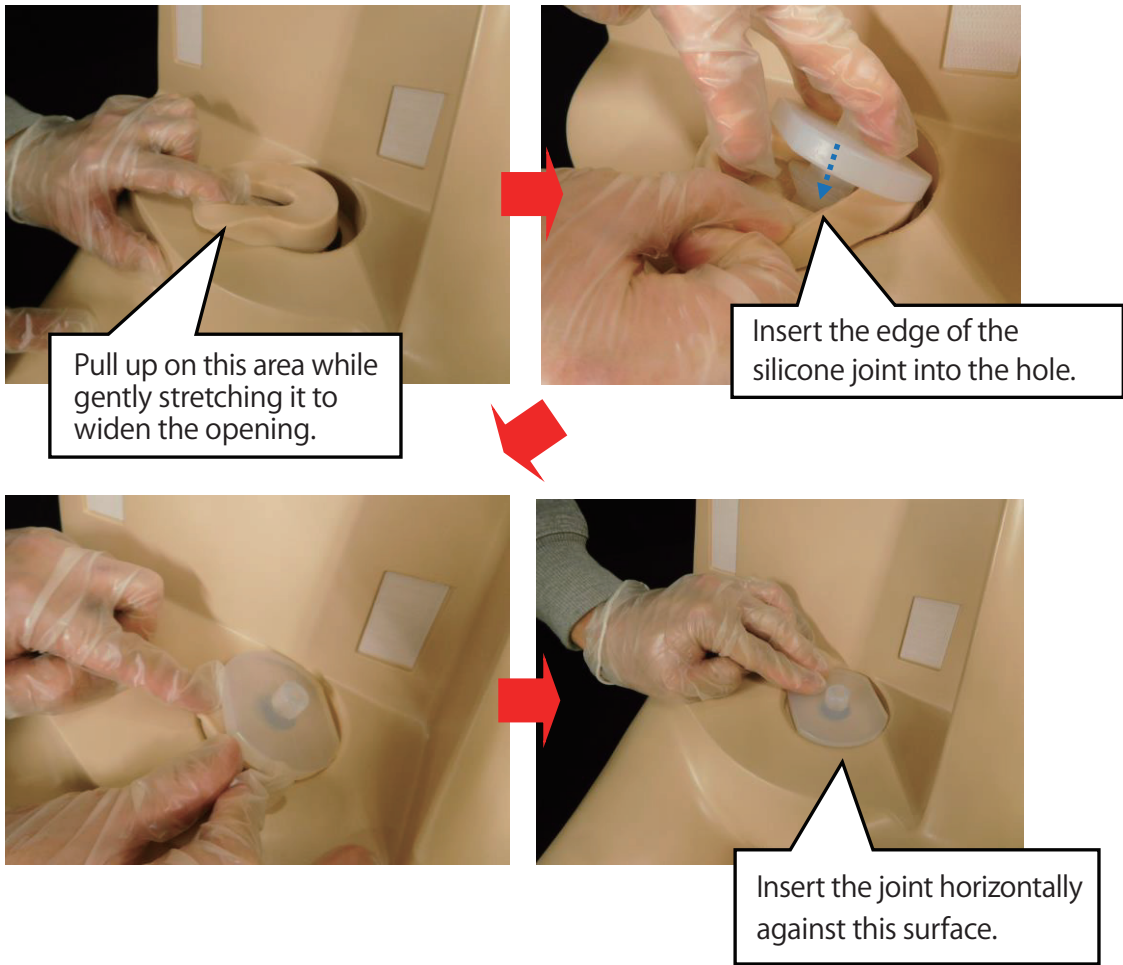


- (3) Pull the silicone joint from the upper part and remove it.



- (4) Ensure that both the intestinal tract and the silicone joint are free from any simulated stool or debris to ensure proper liquid flow during enema administration.

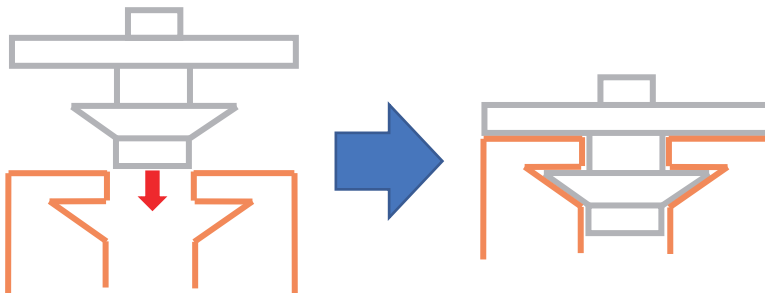
(5) Connect the silicone joint to the intestinal tract.



**NOTE**

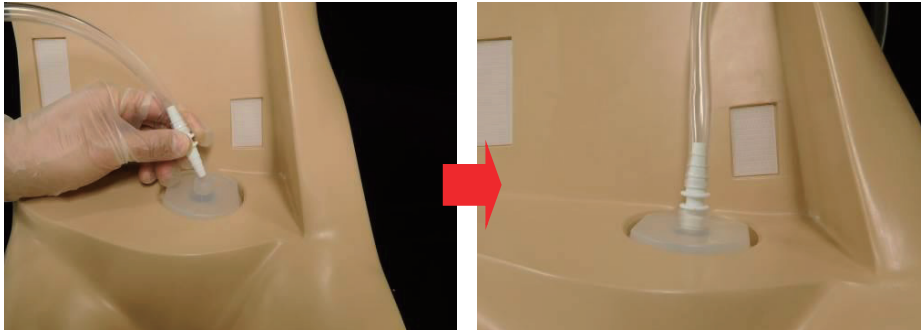
There are grooves inside the upper hole of the intestinal tract, which are designed to fit the flange of the silicone joint. Make sure to confirm that the joint is properly fitted into these grooves.

Refer to the pictures below that show a more detailed view of the structures of each part.

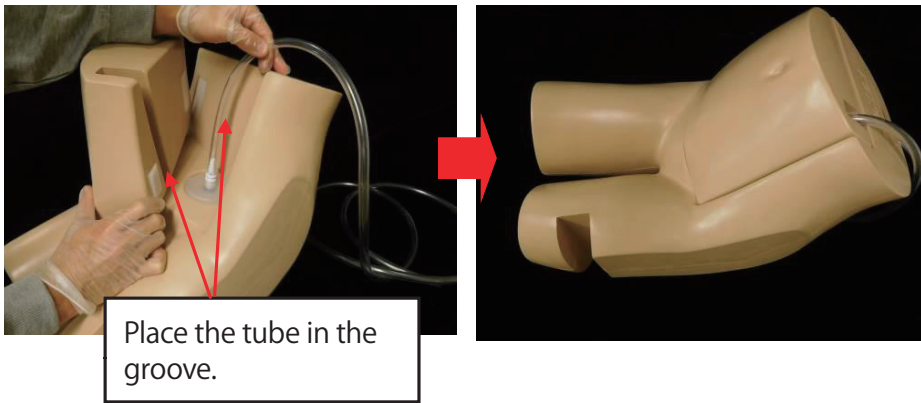




(6) Attach the enema drainage tube to the silicone joint.



(7) Attach the abdomen to the torso, and make sure to thread the drainage tube through the groove in the back of the abdomen.



(8) Place the model in the left lateral position while holding the buttocks.



(9) Ensure that the buttocks are securely attached to the torso.





(10) Prepare a bucket or container under the table or bed and place the end of drainage tube into it.

(11) Attach the model to the stand to begin training.



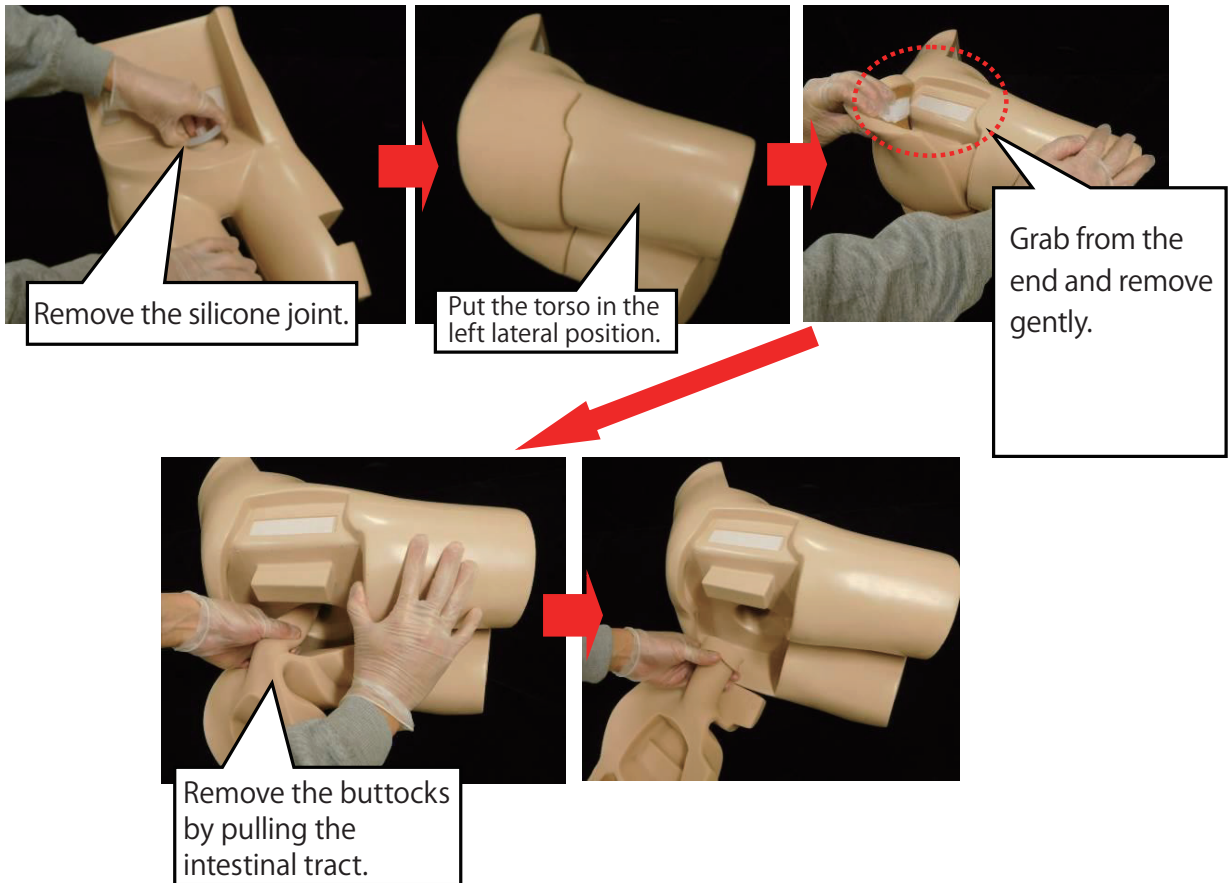
**NOTE**

Be sure to apply sufficient glycerin before beginning training.

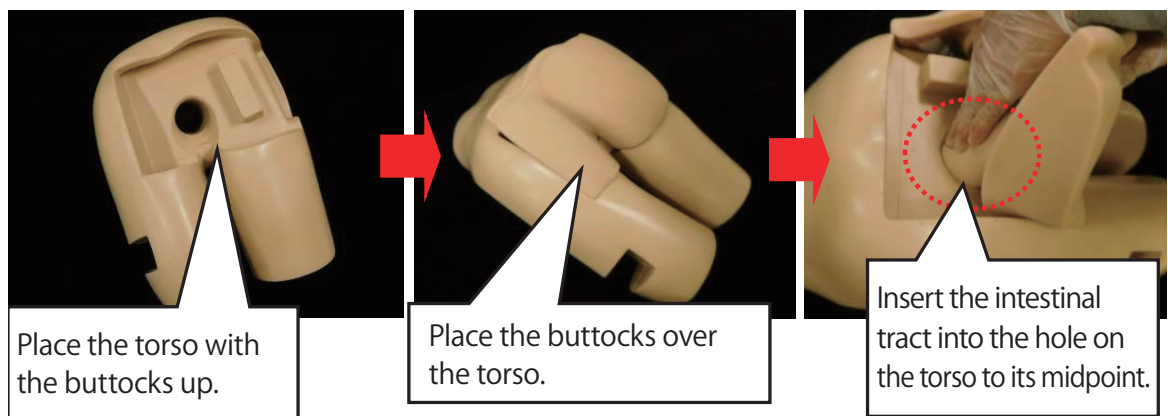
### 3-4 Method for Detaching and Attaching the Buttocks

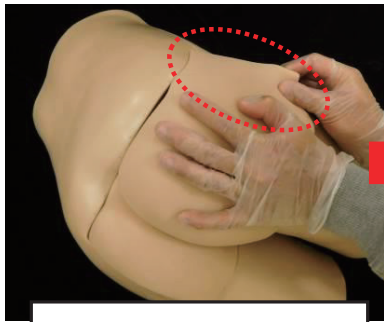
(1) Follow these instructions to detach or attach the buttocks from the torso for maintenance or replacement.

Detach as follows:



(2) Attach as follows:





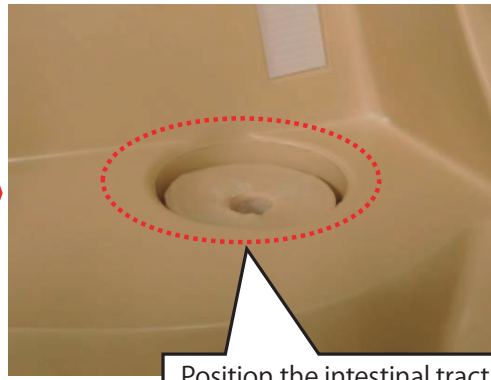
Position the buttocks and secure using the hook and loop fasteners.



Change the position of the torso so the buttocks are down while holding the buttocks.



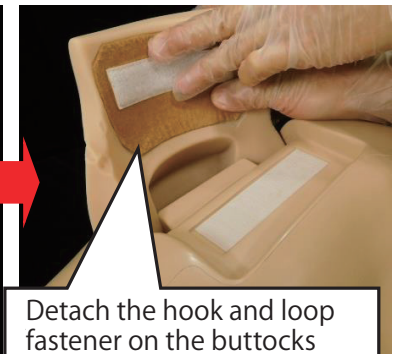
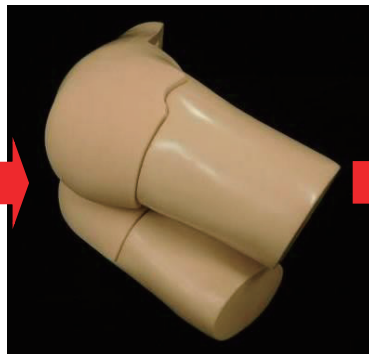
Pull the intestinal tract up and out.



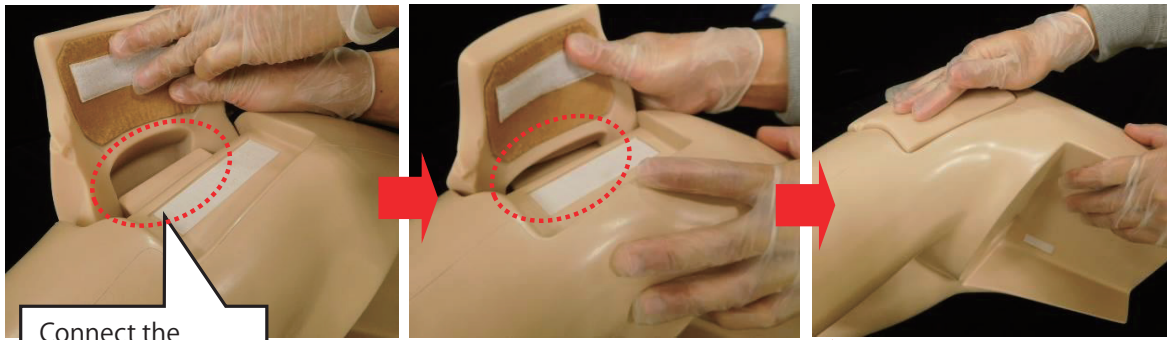
Position the intestinal tract in the hole of the torso as shown in the picture above.



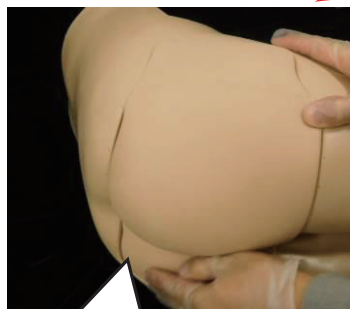
Place the model in the left lateral position while holding the buttocks.



Detach the hook and loop fastener on the buttocks from the torso.



Connect the bump on the torso to the indentation on the buttocks.



Ensure that the buttocks are securely attached to the torso.



Attach the silicone joint and abdomen to the torso.

## 4. Maintenance

- (1) Remove the buttocks and wipe off any dirt or stains on the torso using a wet cloth or gauze soaked in water or diluted neutral detergent.
- (2) Use water or a diluted neutral detergent to remove dirt on the buttocks and rinse well with water to prevent the deterioration of the product which can occur if glycerin or simulated stool remain on the product after it dries.

Use only a sponge to clean inside the intestinal tract; using any brush may damage its surface.

- (3) Wipe off any remaining water and glycerin using dry gauze or a soft cloth and dry well to prevent mold. Place the buttocks on a soft cloth and let them dry as shown in the photo below.

Make sure that the buttocks do not deform or they may lose their shape.



- (4) Apply baby powder evenly to the dried buttocks and attach them to the torso.
- (5) Wrap with the storage sheet included or soft gauze as the surface might become oily during storage due to the material used.
- (6) Store the product in an environment with a temperature from 0°C to 50°C to prevent deformation. Avoid exposing the product to direct sunlight and UV light as they may cause the product to deteriorate or change color.

## 5. Specifications

Name	Length	Width	Height	Weight
Model	Approx. 32cm	Approx. 51cm	Approx. 29cm	Approx. 5.4kg
Storage bag	Approx. 29cm	Approx. 53cm	Approx. 32cm	-